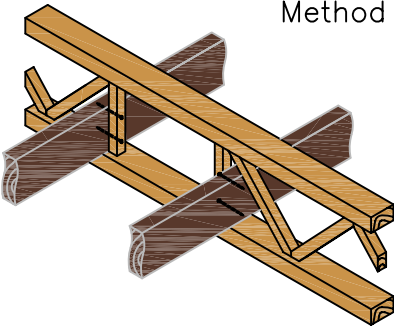


Secure strongback with (2) nails* through the vertical web.

* (3" Nails or 3" Screws)

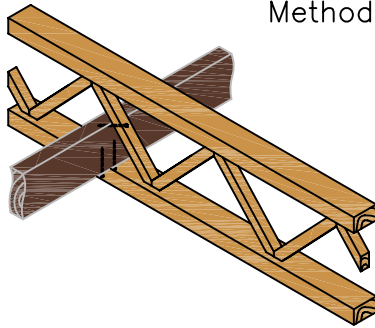
Method 1



Secure strongback with (2) nails* through the bottom chord and (1) nail* through the diagonal web.

* (3" Nails or 3" Screws)

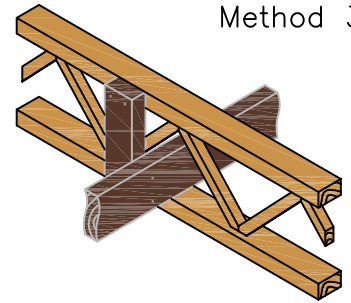
Method 2



Secure vertical (2x4) with (2) nails* to both chords and strongback to vertical with (2) nails*.

* (3" Nails or 3" Screws)

Method 3



STRONGBACK (at mid-span)

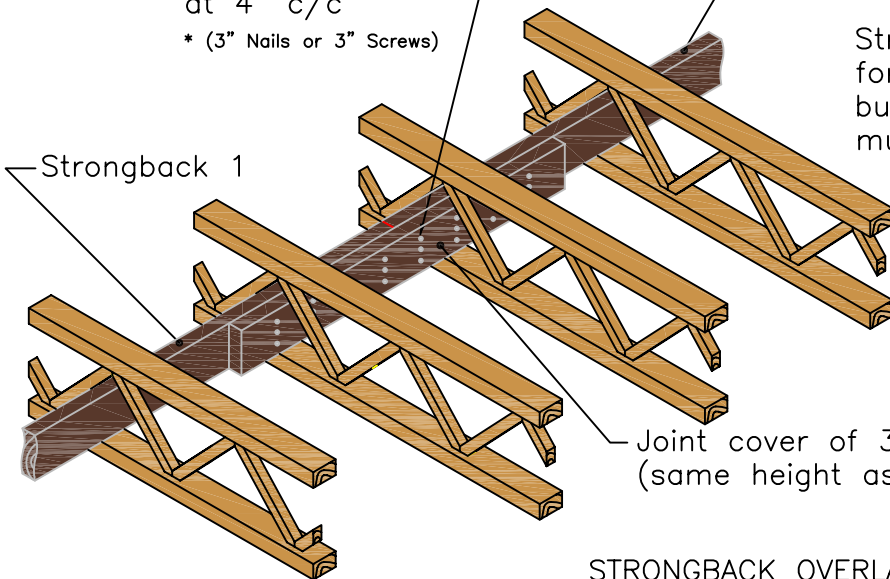
3 rows of nails* at 4" c/c

* (3" Nails or 3" Screws)

Strongback 2

Strongback can be cut between 2 joists for ducts, pipes and wires if needed, but at least 3 consecutive joists must remain attached together.

Strongback 1



****Use dry lumber for strongback****

STRONGBACK OVERLAP

DETAIL No.5